



REUNION PITCH DECK
A FILM BY JOHN LIANG



TABLE OF CONTENTS

STORY	3-4
MOOD REEL	5
FILMMAKER'S STATEMENT	6
PREVIOUS WORK	7
PRODUCTION TEAM BIOS	8-16
CHARACTER BREAKDOWNS	17-23
CINEMATOGRAPHY	24-29

A dark, moody photograph of a person standing in a room with large windows, framed by a torn paper effect. The person is silhouetted against the light coming from the windows. The room appears to be a living area with a fireplace mantel visible in the background.

STORY

Ten years ago, a group of college friends — Izzy, Lauren and Michelle — did a terrible thing and made a terrible choice to keep it secret. They were celebrating their college graduation, and as a consequence of their drinking and driving they ran over their friend Ava with Lauren's car. While Ava was still alive, the girls decided to not call 911 and keep her death a secret so they would stay out of prison. They kept this secret from Ava's twin sister, Asia, also their friend. It is a secret that has eaten at Izzy ever since that fateful night.

Now, Asia has invited her old friends to her weekend house for a gathering meant to commemorate the decade since Ava died. Despite their misgivings, Lauren, Izzy and Michelle all go. Izzy is especially eager to get away from her husband Ethan who has been extremely distant. But when they arrive, they learn that Asia's true intentions are far more sinister. Asia has dedicated herself to witchcraft and necromancy — death magic. She has been searching for a way to resurrect Ava from the dead, and with the help of her new husband Samuel, she has found a way to make it happen. She has brought her friends there to take part in the ritual, which can only take place on this one night when the stars have aligned...



STORY CONT.

Asia drugs her friends so they cannot escape and then forces them to watch her poison her adopted daughter so that after she dies, Ava's soul can inhabit her daughter's body. Izzy, Lauren and Michelle are terrified but powerless to do anything as Ava's spirit returns in the daughter's body. She immediately tells Asia that their friends hit her with their car and left her for dead. Asia is furious and immediately attacks her friends. In the chaos, Lauren kills the resurrected Ava — again — and then is killed by Asia. Michelle and Izzy run off and hide and a tense stand-off between them and Asia and Samuel develops. As the body count rises, Ava's spirit continues to bounce from body to body, but Michelle and Izzy are able to fight back and hold their own. Finally, when it is just down to Izzy and Asia, they are interrupted by Ethan who has come to make amends with Izzy. In the final fight, Ethan is wounded by Asia, and Asia is killed by Izzy, who then rushes Ethan to the hospital. As the film ends, we see Ethan in his hospital bed, has been possessed by the spirit of Ava.

MOOD REEL

REUNION is grief-ridden, chilling, and features a subdued atmosphere. The below reel depicts and portrays the ambience that the final film will have.

REUNION Mood Reel



FILMMAKER'S STATEMENT

REUNION is a story about grief, about loss, about revenge and about the irrevocable -- decisions that cannot be unmade, actions that cannot be undone. It is the story of two sisters -- one who lived and one who died, and how the surviving sister went to unimaginable lengths to bring her dead sister back from the grave. It is the story of the women who caused her sister's death, and the extremes that those women will go to to escape a reckoning once the past finally catches up with them. Nothing is more irreversible, as permanent, and final as death. What we seek to do with this film is explore above all a story about choice, a story about how either in life, we make the choices or the choices make us.

-- JOHN LIANG Director/Co-Writer





PREVIOUS WORK

The production team's previous project, RECOVERY (2019), a psychological thriller, was acquired by SP Releasing and distributed in North America in 2019.

[Recovery Trailer](#)



PRODUCTION TEAM BIOS



JOHN LIANG DIRECTOR/CO-WRITER

Born and raised in Chicago, filmmaker John Liang studied film at NYU's Tisch School of the Arts, where he graduated with honors. While writing for the Onion in New York, he went on to direct several short films and served as an associate producer for the independent drama *ANIMALS* (2014). After relocating to Los Angeles, John made his feature film debut as the co-writer and director of the 2018 film *RECOVERY*, a psychological thriller set in a women's drug rehab center. *REUNION* is his second feature film.



ALYSSA DEVINE PRODUCER

Alyssa Devine is a Los Angeles based Producer who has been making independent films since 2011 through her company PigRat productions, which she runs with her husband Griffin. She prides herself on using the most current technologies to run productions more efficiently while still delivering a professional, polished look. She has been working in the film industry for the past 8 years and has Produced four feature films to date along with countless shorts, music videos and commercials.



OLIVIA KUAN DIRECTOR OF PHOTOGRAPHY

A graduate of NYU's Tisch School of the Arts, Olivia Kuan's passion is shooting narrative films. Her talent is in capturing stories and she is best at building upon ideas and adding to them with her own. Having shot 9 features thus far, her goal is to continue to find compelling scripts that offer an opportunity for Olivia to connect with the characters and visually tell their tales. Olivia is a proponent of cinematography that enhances but does not distract the viewer from the story.



RYAN BARNES CO-WRITER

A graduate of New York University, Ryan Barnes is a screenwriter and musician born on Long Island, NY. This is his second project with John Liang, having previously scored Liang's debut feature, RECOVERY.



GRIFFIN DEVINE PRODUCER/EDITOR

Griffin likes to get involved in the editing process as soon as possible. He knows how important it is to plan ahead for all aspects of production, including post. Whenever possible Griffin will come on set to log and review footage in real time, catch mistakes, and make suggestions that will work better for the edit. His goal is always to show directors how the footage is coming together so that they can mold the final product into the best representation of the script in a convenient and timely manner.



ROXANNE MCDANEL LEAD MAKEUP ARTIST

Roxanne had a lifelong love of movies that lead her to attain her degree in Radio Television and Film, graduating with honors from the University of Texas in Austin. While working with cosmetic lines such as Pur Minerals, Napoleon Perdis, and Stila Cosmetics she began assisting Special Effects Artists and received training in sculpting and mold making, body painting, tattoo cover ups, airbrush makeup, beard and false hair application, along with furthering her training in beauty makeup.

Roxanne's work has been seen in numerous festivals such as Louisiana Film Prize, Fantastic Fest, Deep in the Heart Festival, Hollyshorts Festival, iHorror Awards, Los Angeles Independent Film Festival, and TentSquare, along with others. In addition, her work has been shown on projects on TV networks Lifetime, HBO Latino, TLC, Up!, and shorts HD.



NATHAN PATTERSON COMPOSER

Nathan Patterson is composer and musician based in Brooklyn, NY. This is his second project with John Liang, and his third project with Ryan Barnes.



BIANCA GOODLOE ATTORNEY

Bianca Goodloe is a U.S. (New York and California) and European Union registered attorney. Having worked at the top global and magic circle law firms Weil, Gotshal & Manges, LLP and Linklaters (in Prague, Berlin and London), Ms. Goodloe has years of experience in film finance and entertainment law. Ms. Goodloe's past clients have included Paramount, New Line, Universal, Miramax, Warner Bros. and Endemol, for whom she has collaborated on the advisement of the structuring and allocation of over 1 billion U.S. dollars into over 200 feature film and television productions. Goodloe is also an adjunct professor of film finance at University California Los Angeles and New York University.

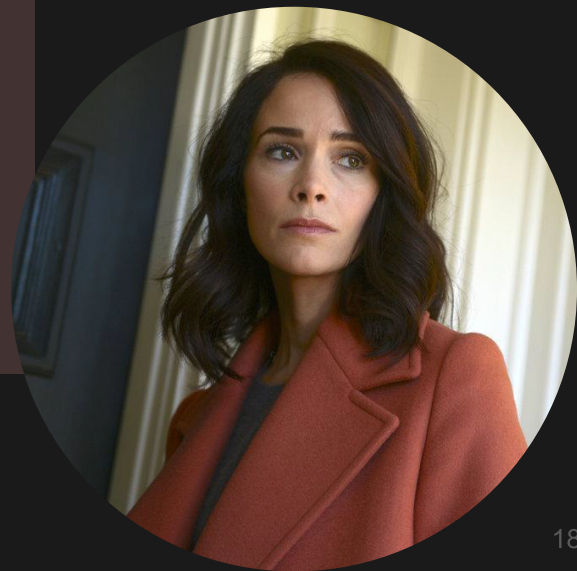


CHARACTER BREAKDOWNS



IZZY

Isabel, or “Izzy”, early 30s, is a professor at a prestigious university. But despite her professional success, she is deeply unhappy -- trapped in a loveless marriage to her husband Ethan and tormented by a secret she and her friends have been keeping from long ago.





ASIA

Asia, early 30s, has never been the same since her twin sister Ava died ten years ago. She has become strange and her embrace of death-magic has warped and twisted her. She will do whatever it takes to bring Ava back to the realm of the living.





MICHELLE

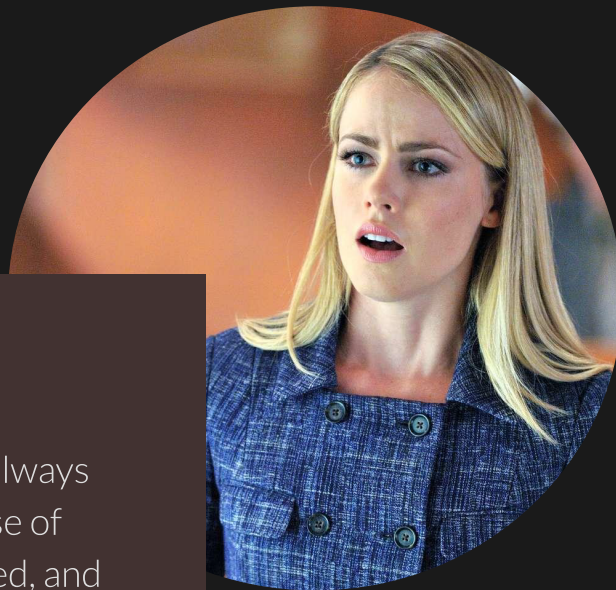
Michelle, early 30s, Asian-American, is a successful actor. She has a big personality and is outwardly funny and charismatic, but underneath her charm she also has a dark side.





LAUREN LAUREN

Lauren, early 30s, is a lawyer who always looks out for number one. Her sense of self-preservation is highly developed, and she will throw anyone under the bus if she deems them a threat to her or her interests.





SAMUEL

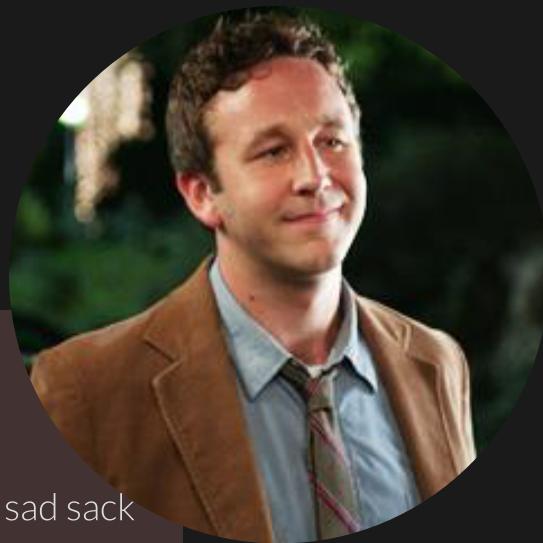
Samuel, 40s, is a powerful warlock and practitioner of death-magic. Big and strong, he is a massive mountain of a man with a dark heart and a fierce devotion to his wife, Asia.





ETHAN

Ethan, early 30s, is Izzy's husband. A sad sack with little in the way of ambition or vigor, he and Izzy have been stuck in a loveless marriage for awhile now. His lack of passion for his wife extends to other areas, and he has no lust for life.





CINEMATOGRAPHY

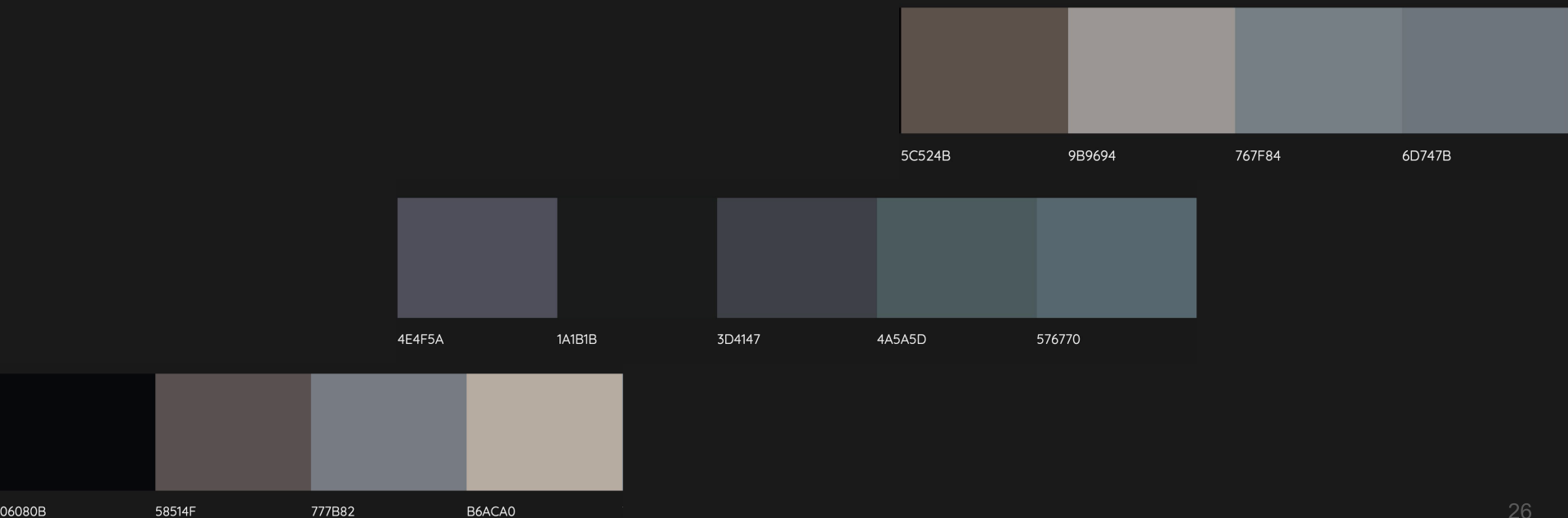
CAMERA/LIGHTING DESIGN

The film will have great contrasts in its lighting design, with scenes either plunged into shadowy darkness, or overly bright, with a harsh, almost over-exposed look.



VISUAL + PRODUCTION DESIGN

The film will have a muted and subdued color palette, mostly consisting of neutral colors such as black, white, blue and grey. It will reflect how none of the characters are truly alive, but are tethered to the world of the dead by their shared grief and secret.



PRODUCTION DESIGN REFERENCES

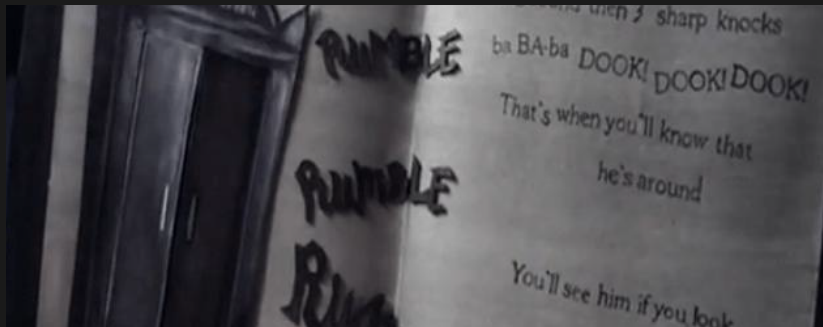
THE BABADOOK (2014)

Bleak color palette

Moody

Nightmare-ish

German expressionist



PRODUCTION DESIGN REFERENCES

THE PRODIGY (2019)

Subdued color palette

Cool greys + blues

Ominous



PRODUCTION DESIGN REFERENCES

THE WITCH (2015)

Gloomy
Candle lit
Shadowy
Surreal



CONTACT

John Liang

john@lonelydevilfilms.com

lonelydevilfilms.com

